



Shanghai Fufa Industrial co., Ltd.,

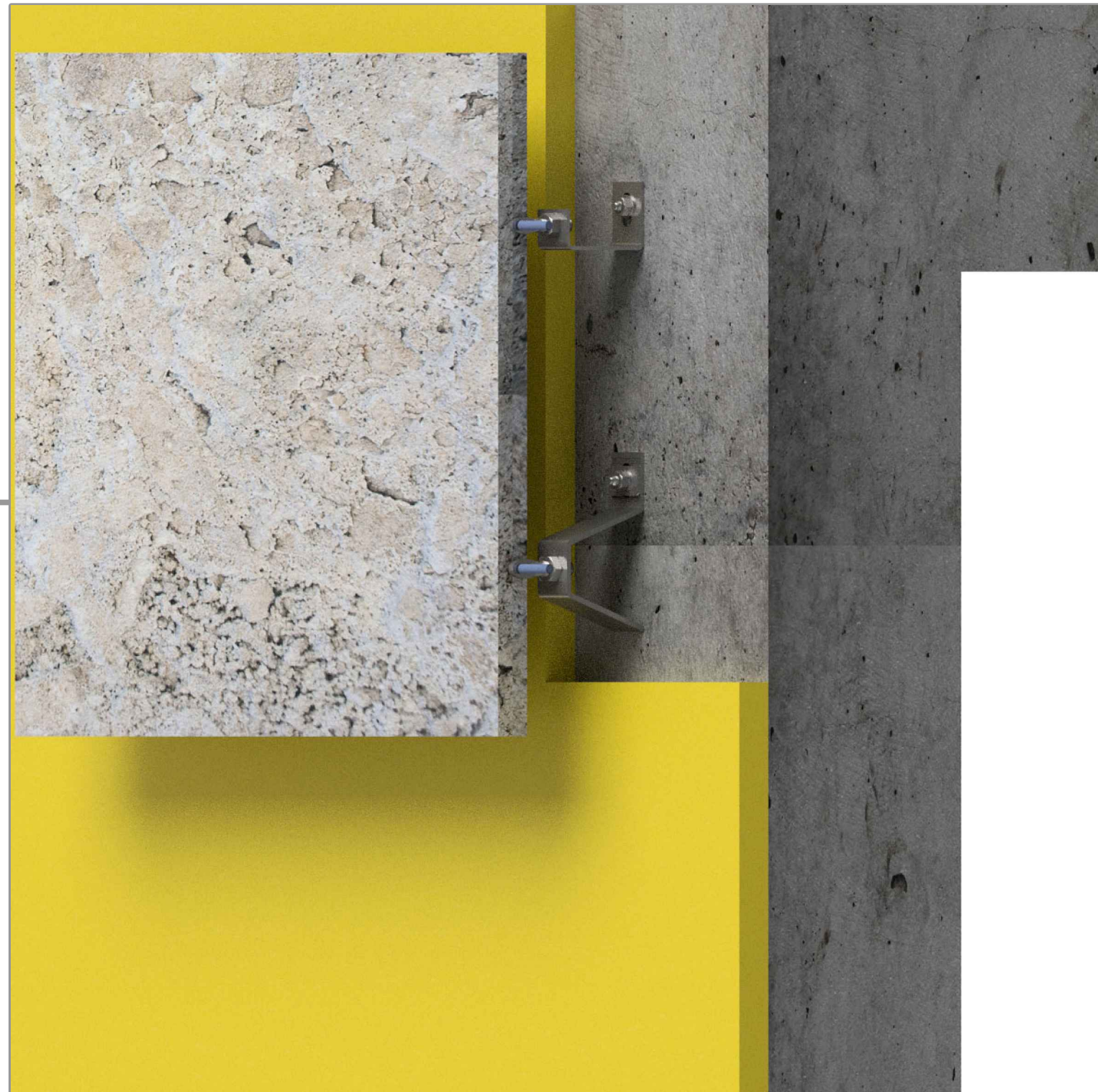
HZ02-S

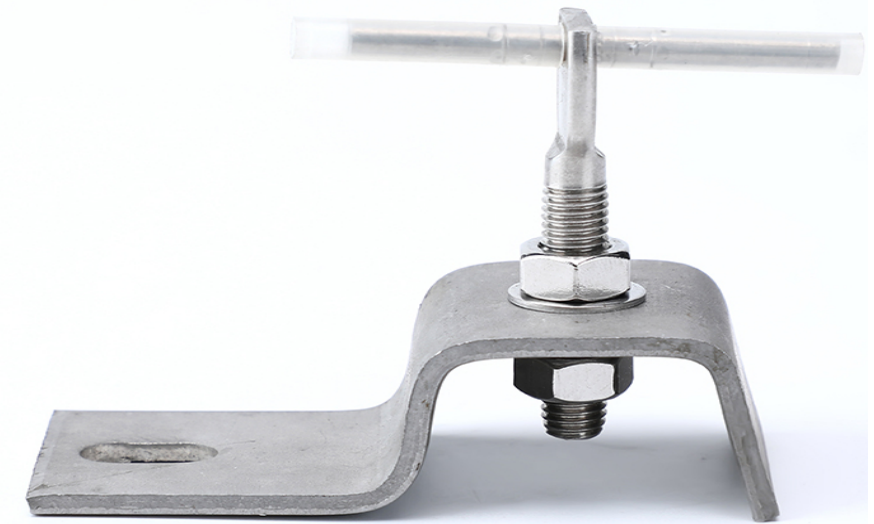
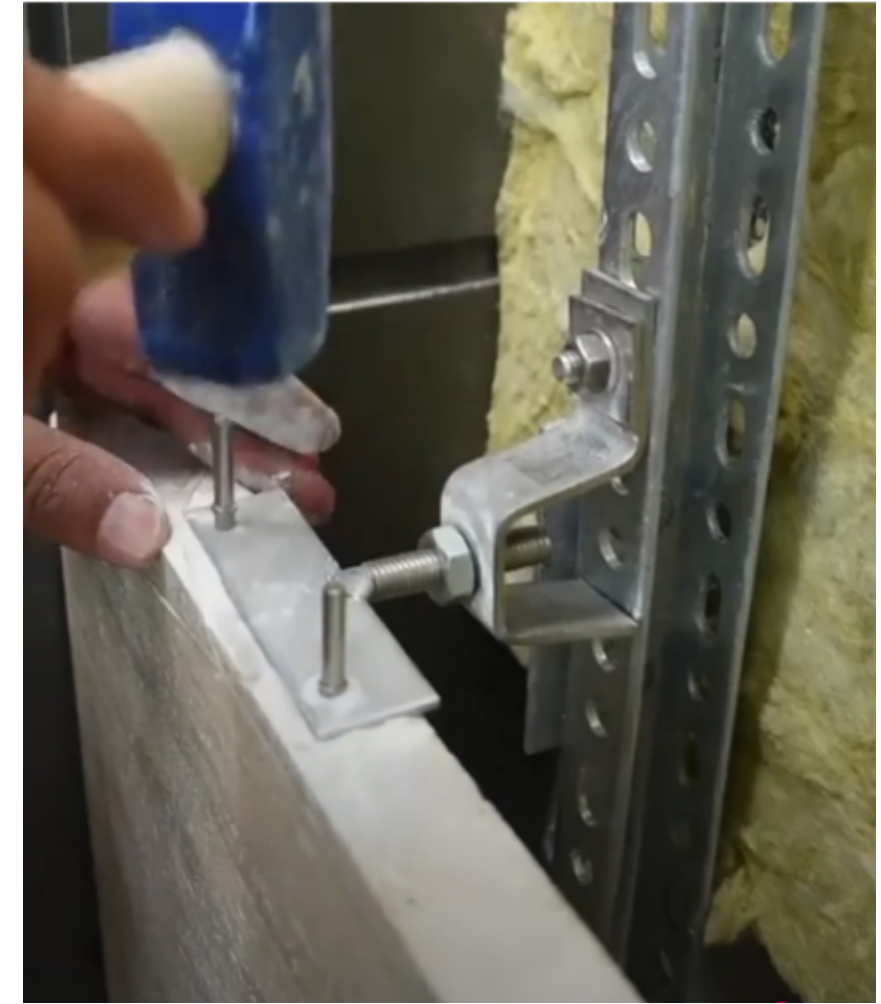
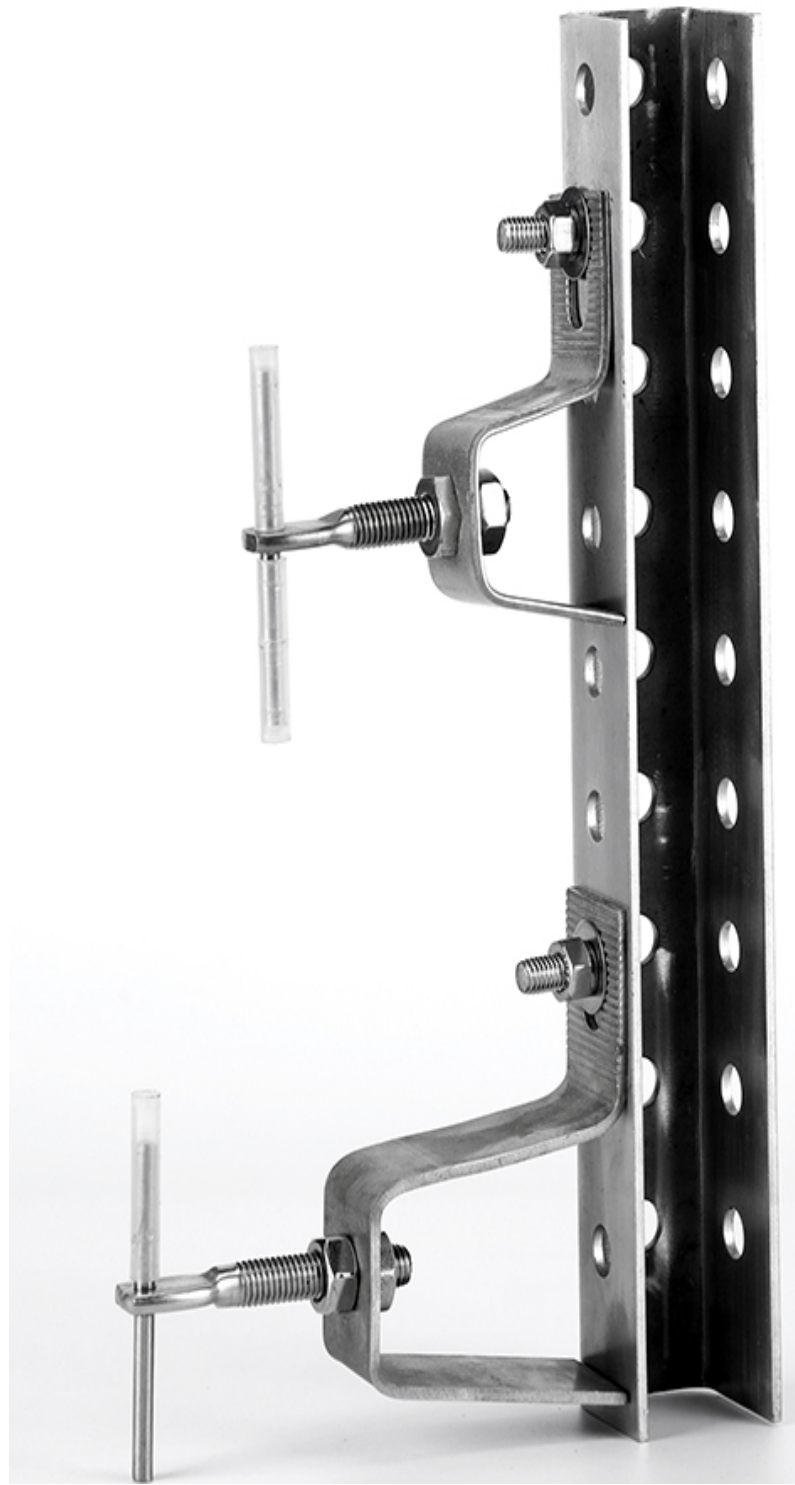
HZ Z ANCHOR FIXING SYSTEM

Concept Drawings

Series: HAZCD-HZ02-S-ST

Direct Fixing System For Rain Screen Stone Cladding System for Installation at Vertical and Horizontal Joints





吴高® Shanghai Fufa Industrial Co., Ltd.,

Building 6, No. 2185 Panchuan Road, Baoshan District, Shanghai

telephone 0086+15821218807

Http://www.zgjzjw.com E- fulian.wu@shffsy.com

Title : Natural Stone Facade - Built-up Cavity Wall - System HZ02-S Specification

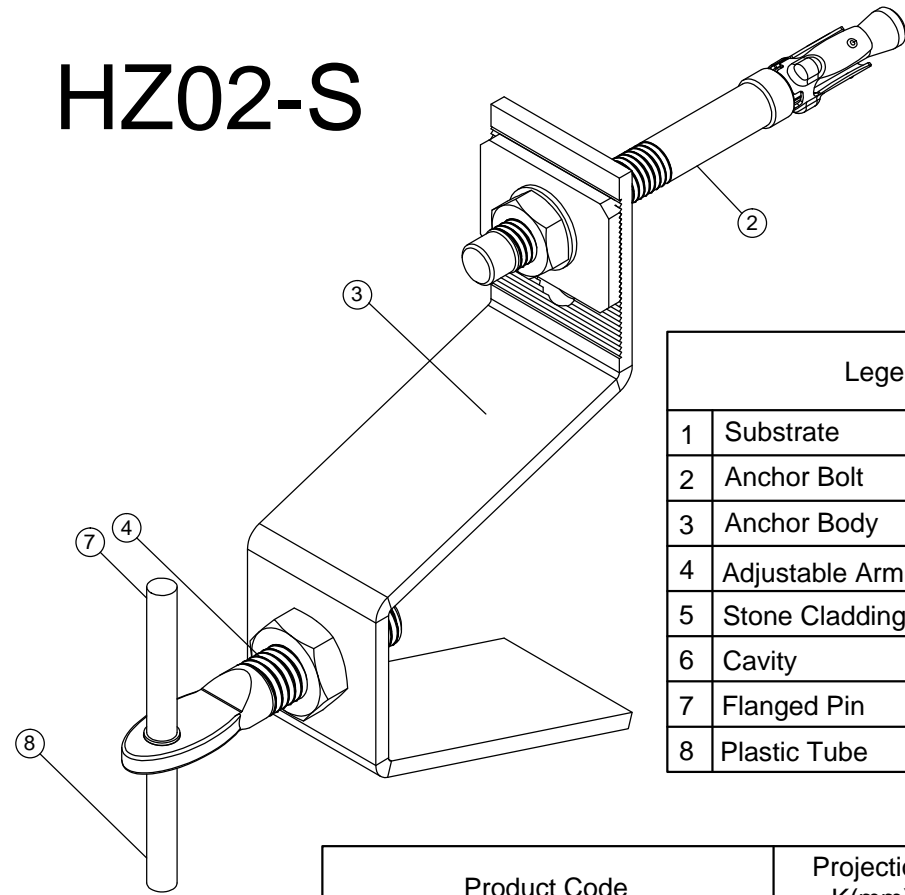
Drawing No. HAZCD-HZ02-S-ST-01

Series Concept Drawings - Natural Stone Fixing System - HZ02-S Support Anchors

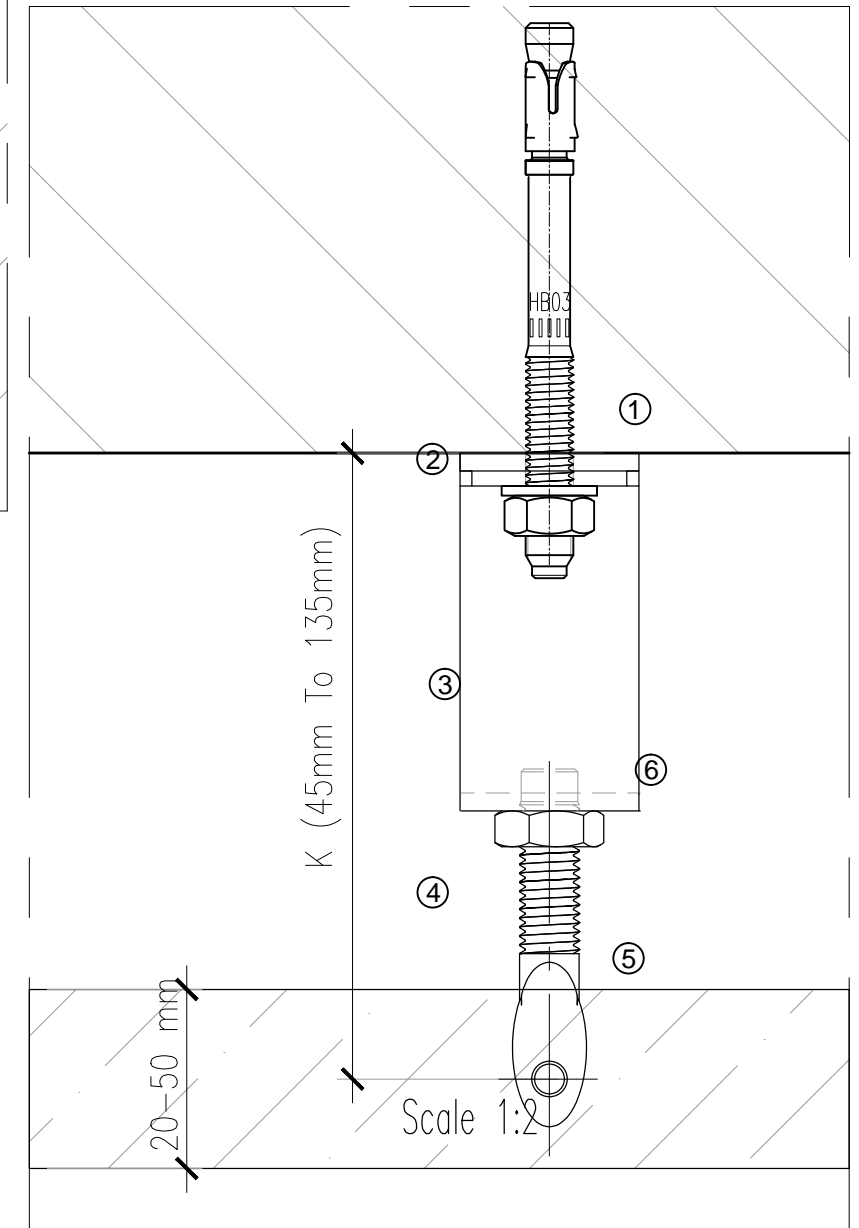
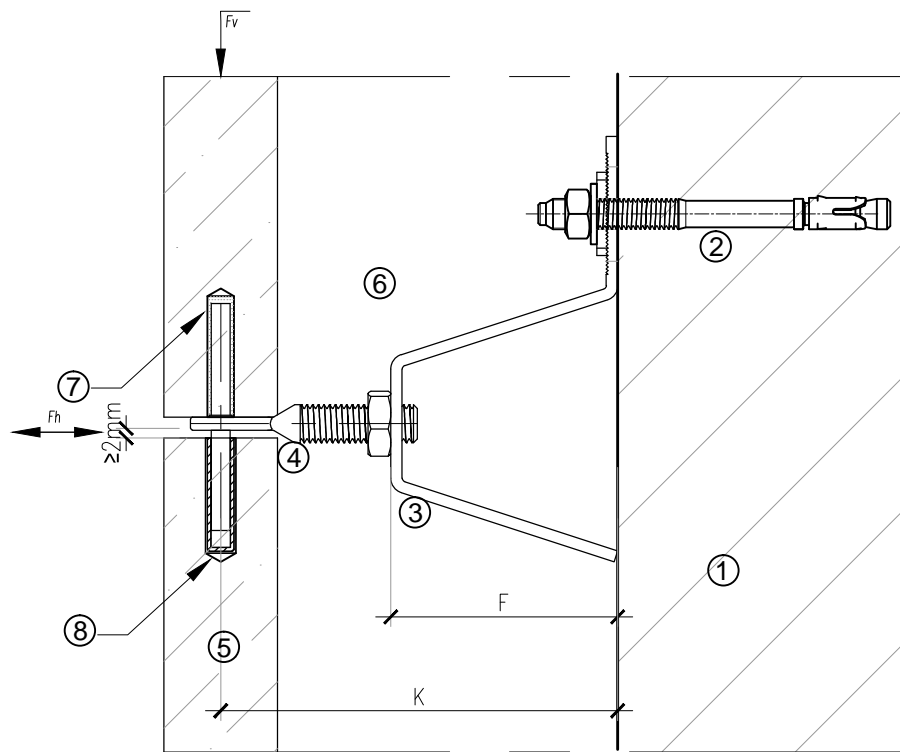
Revision 01 scale As Shown

Page : 1/13

HZ02-S



Legend	
1	Substrate
2	Anchor Bolt
3	Anchor Body
4	Adjustable Arm
5	Stone Cladding Panel
6	Cavity
7	Flanged Pin
8	Plastic Tube



Product Code	Projection K(mm)	Perm. Load Fv(kN)	Wind Load Fv(kN)	Body size (mm)	Adjustable arm (mm)	Bolt size (Metric)
HZ02-S-33010/10	40	500	350	3X30XF10	M10X50	M8
HZ02-S-33020/10	50	500	350	3X30XF20	M10X50	M8
HZ02-S-33040/10	75	400	320	3X30XF40	M10X60	M8
HZ02-S-33060/10	95	400	320	3X30XF60	M10X60	M8
HZ02-S-33080/10	125	300	320	3X30XF80	M10X70	M8
HZ02-S-330100/10	145	300	300	3X30XF100	M10X70	M8
HZ02-S-43040/12	75	600	450	4X30XF40	M12X60	M8
HZ02-S-43060/12	95	500	450	4X30XF60	M12X80	M8
HZ02-S-43080/12	115	500	400	4X30XF80	M12X80	M8
HZ02-S-430100/12	135	400	400	4X30XF100	M12X80	M8
HZ02-S-53540/14	75	800	500	5X35XF40	M14X60	M10
HZ02-S-53560/14	95	800	500	5X35XF60	M14X80	M10
HZ02-S-53580/14	115	600	450	5X35XF80	M14X80	M10
HZ02-S-535100/14	135	500	450	5X35XF100	M14X80	M10

吴高® Shanghai Fufa Industria
I co., Ltd.,

Building 6, No. 2185 Panchuan Road, Baoshan District,
Shanghai

telephone 0086+15821218807

Http://www.zgjzwjw.com E- fulian.wu@shffsy.com

Title : Natural Stone Facade - Built-up Cavity Wall - System HZ02-S Specification

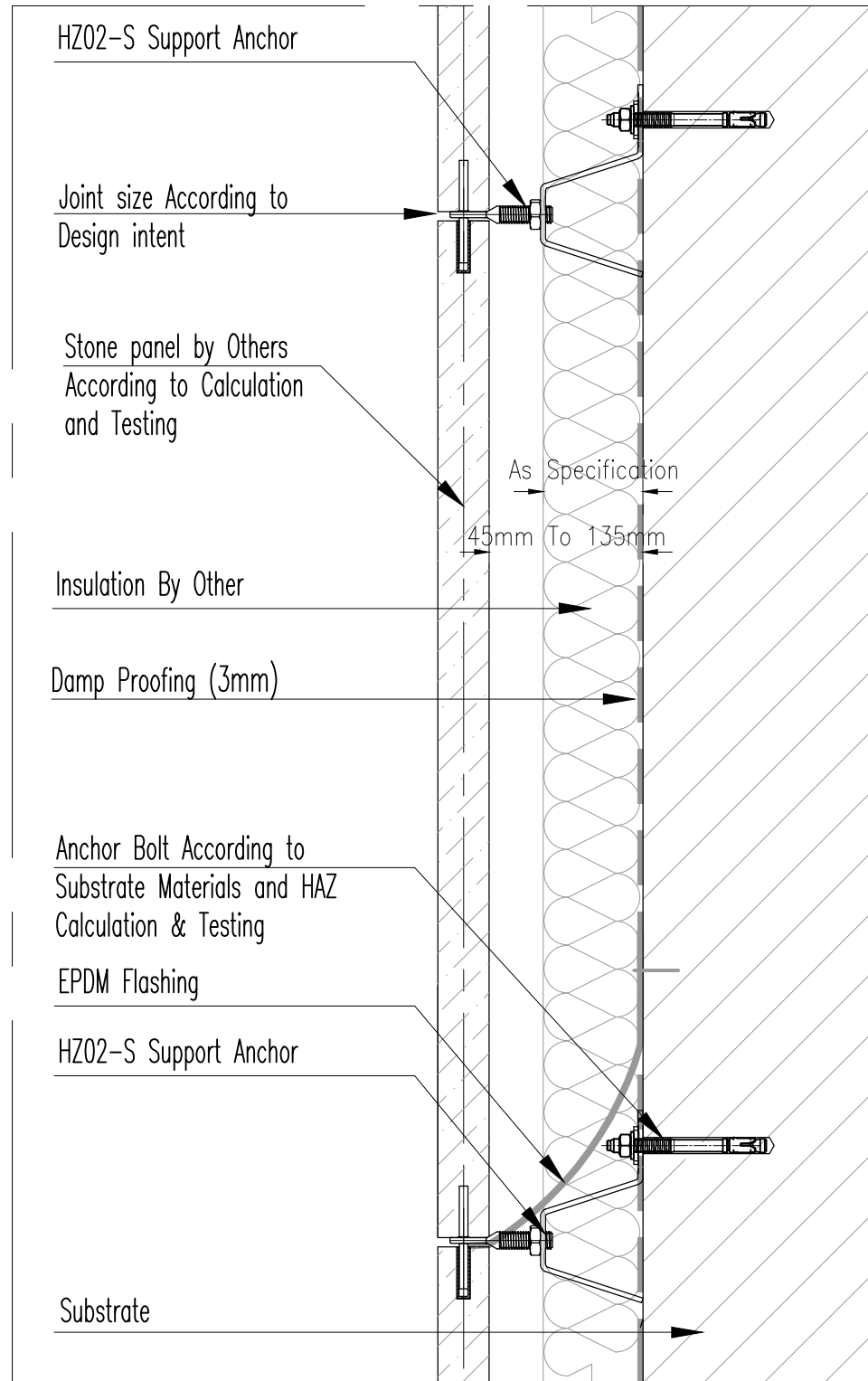
Drawing No. HAZCD-HZ02-S-ST-01

Series Concept Drawings - Natural Stone Fixing System - HZ02-S Support Anchors

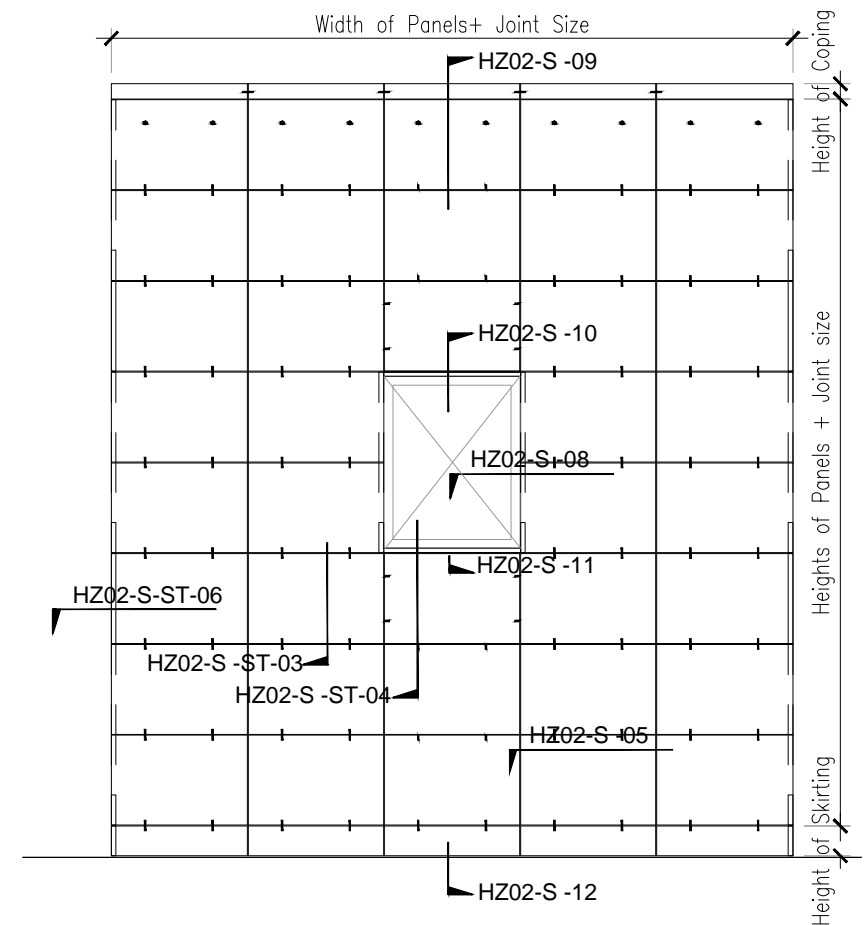
Revision 01 scale As Shown

Page : 2/13

HZ02-S



Vertical section Scale 1:4



Elevation Scale 1:50



Shanghai Fufa Industrial
co., Ltd.,

.Building 6, No. 2185 Panchuan Road, Baoshan Distri
ct, Shanghai

telephone 0086+15821218807

Http://www.zgjzjw.com E- fulian.wu@shffsy.com

Title : Horizontal Joint Installation - Typical Stone Claddings / Rain Screen - Vertical Section

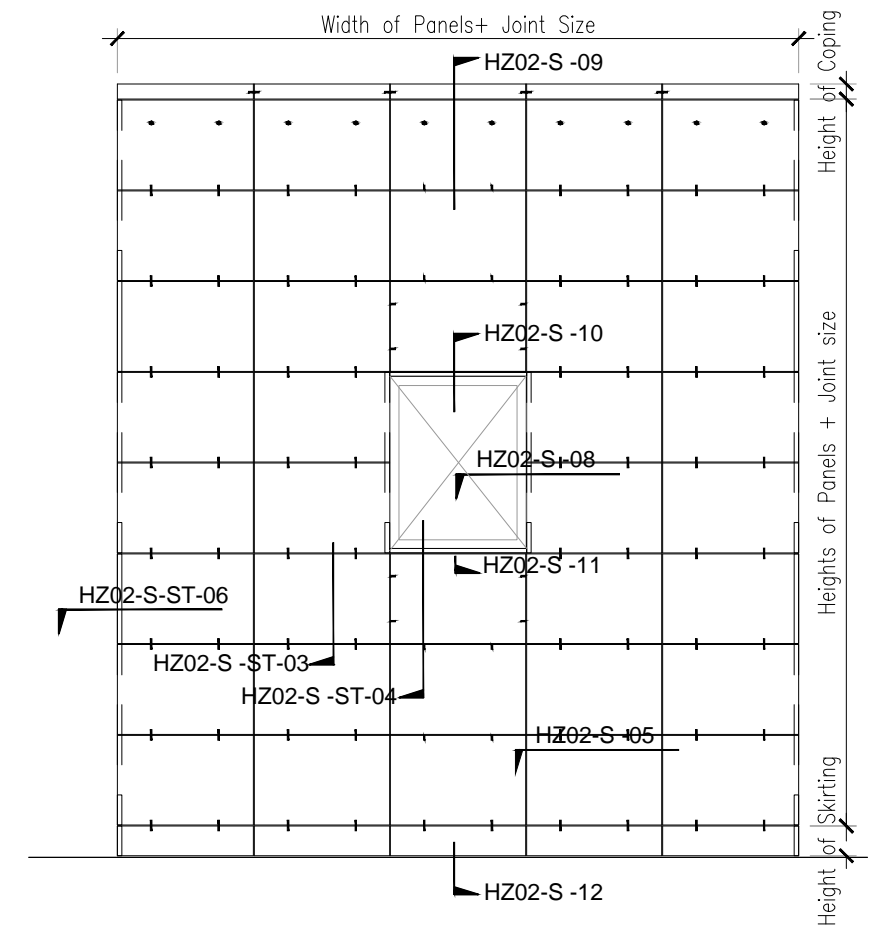
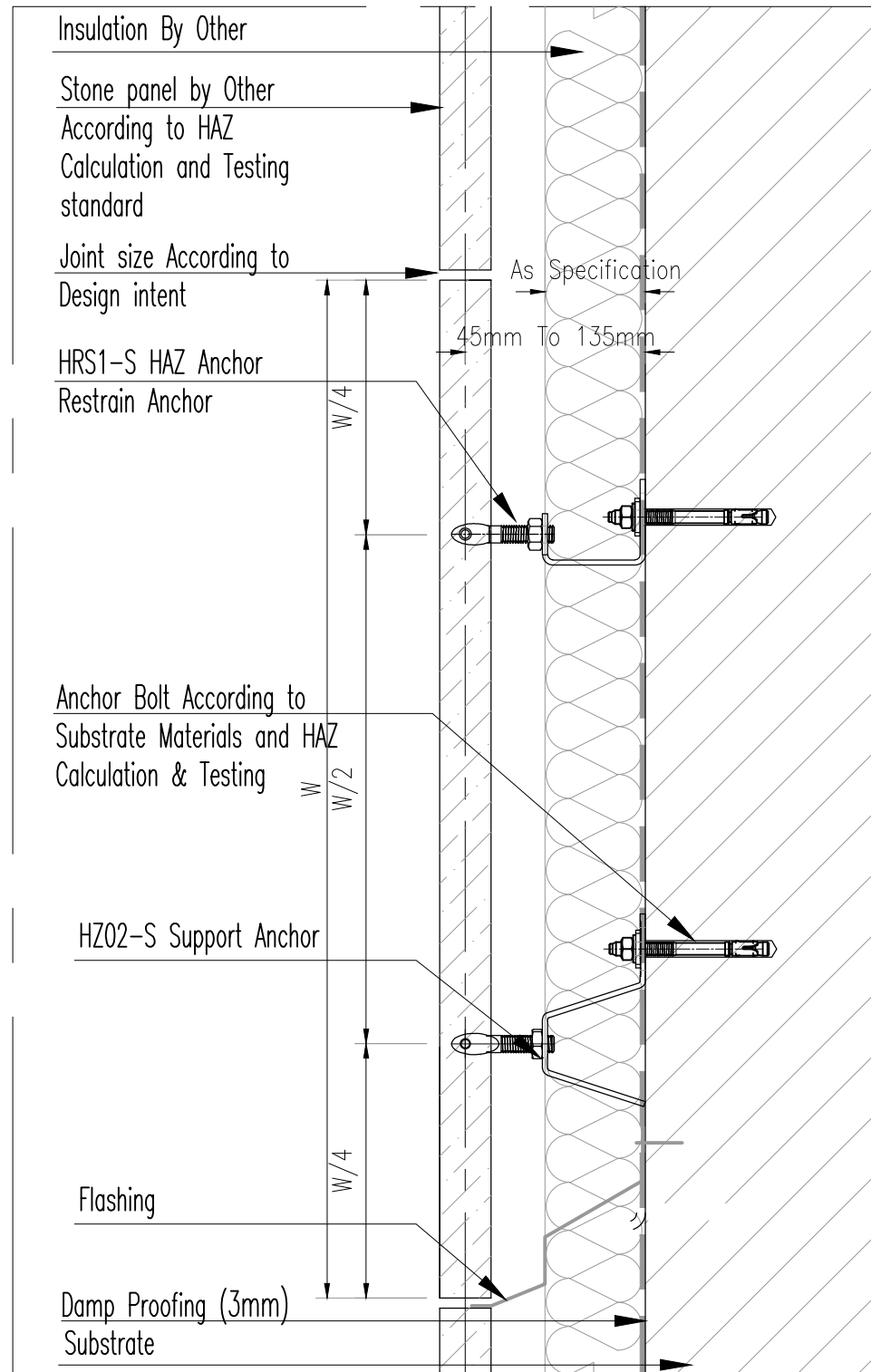
Drawing No. HAZCD-HZ02-S-ST-03

Series Concept Drawings - Natural Stone Fixing System - HZ02-S Support An

Revision	chor01	scale	As Shown
----------	--------	-------	----------

Page : 3/13

HZ02-S



Elevation Scale 1:50

Vertical section Scale 1:4



Shanghai Fufa Industrial
co., Ltd.,

Building 6, No. 2185 Panchuan Road, Baoshan District, Shanghai

telephone 0086+15821218807

Http://www.zgjzwjw.com E- fulian.wu@shffsy.com

Title : Vertical Joint Installation - Typical Stone Claddings / Rain Screen - Vertical Section

Drawing No. HAZCD-HZ02-S-ST-04

Series Concept Drawings - Natural Stone Fixing System - HZ02-S Support Anchors

Revision

01

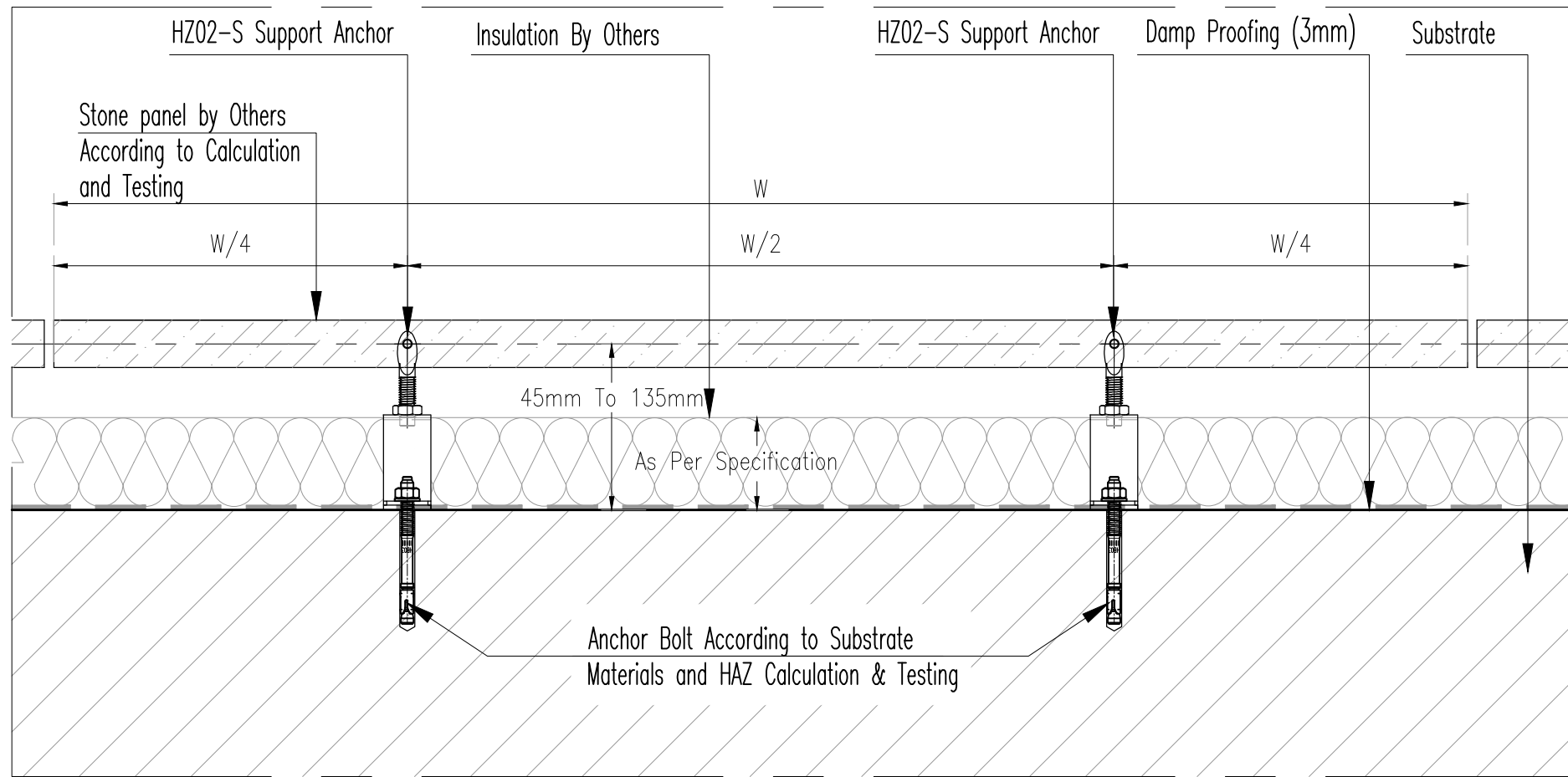
scale

As Shown

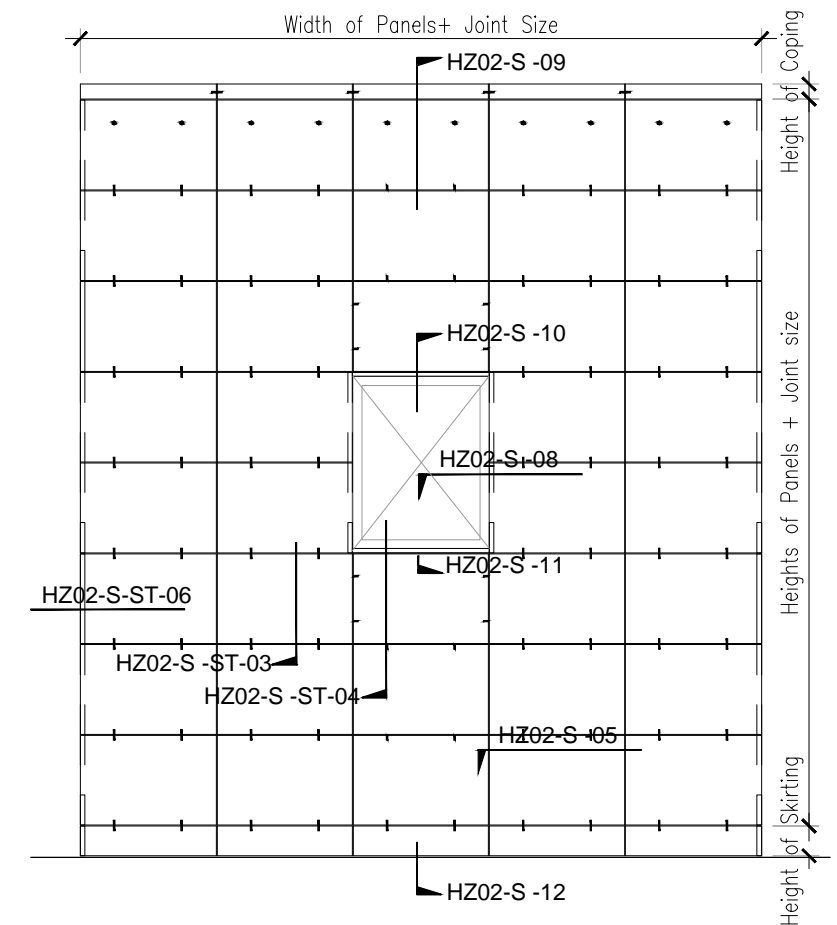
Page :

4/13

HZ02-S



Horizontal section Scale 1:4



Elevation Scale 1:50



Shanghai Fufa Industrial Co., Ltd.,

Building 6, No. 2185 Panchuan Road, Baoshan District, Shanghai

telephone 0086+15821218807

Http://www.zgjzwjw.com E- fulian.wu@shffsy.com

Title : Horizontal Joint Installation - Typical Stone Claddings / Rain Screen - Horizontal SectionH

Drawing No. AZCD-HZ02-S-ST-05

Series Concept Drawings - Natural Stone Fixing System - HZ02-S Support Anchors

Revision

01

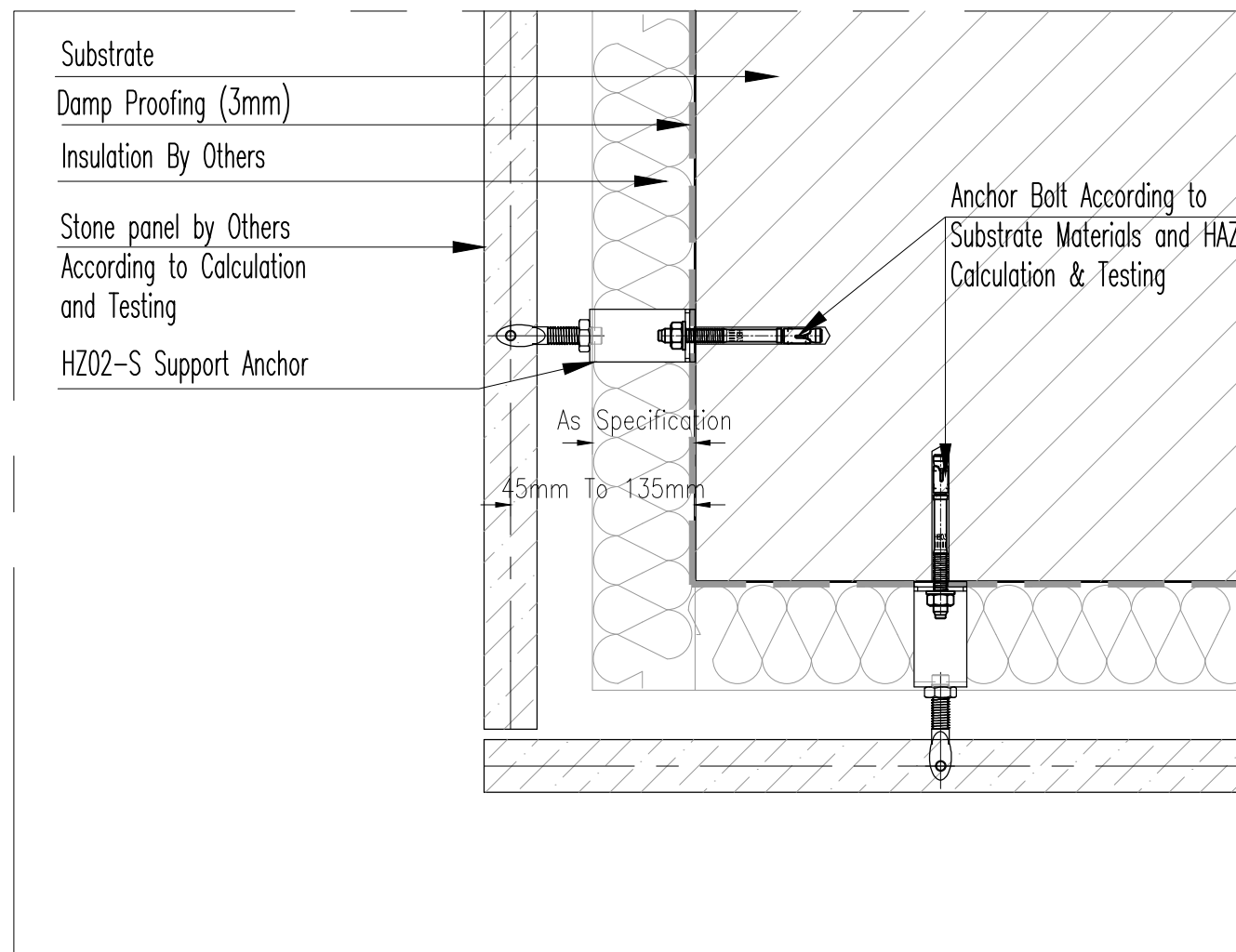
scale

As Shown

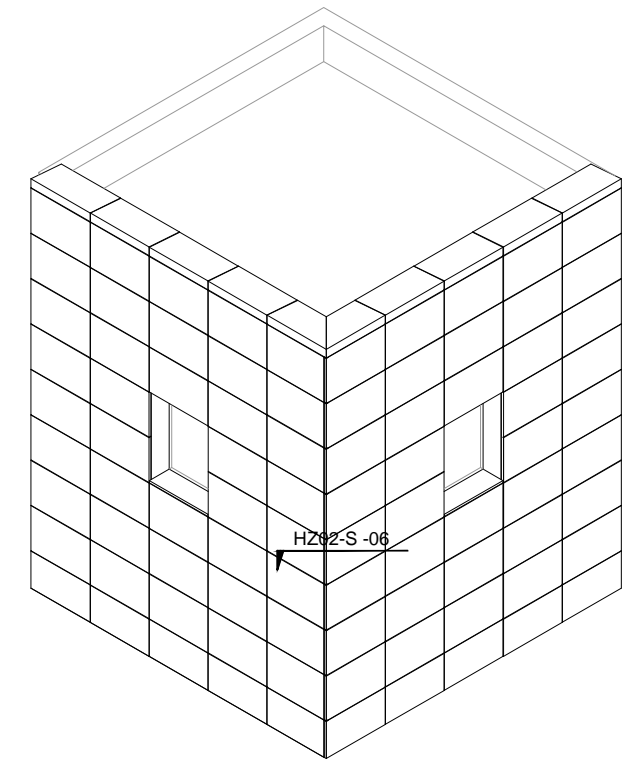
Page :

5/13

HZ02-S



Horizontal section Scale 1:4



Isometric Scale 1:100



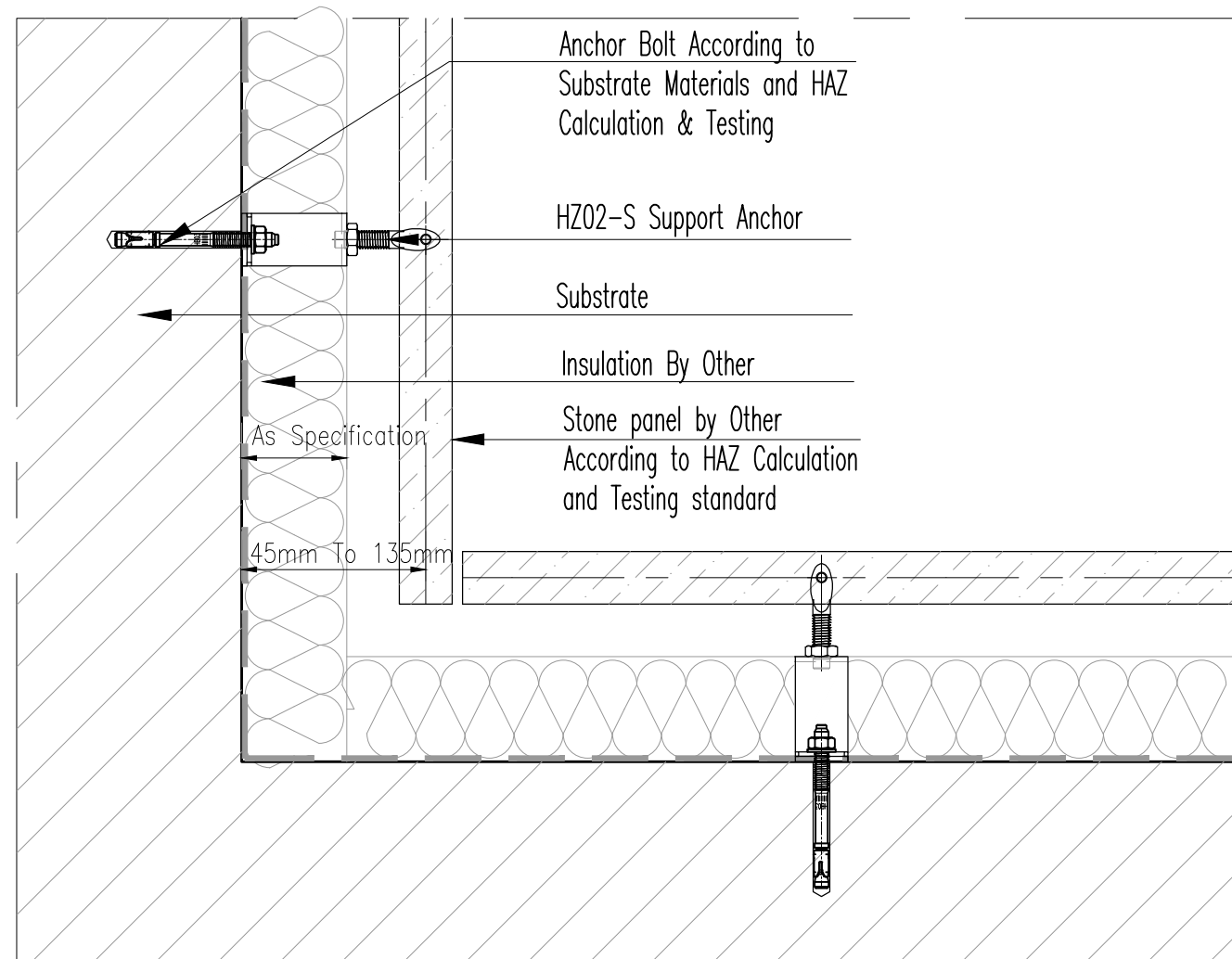
Shanghai Fufa Industrial
co., Ltd.,

.Building 6, No. 2185 Panchuan Road, Baoshan District, Shanghai
telephone 0086+15821218807

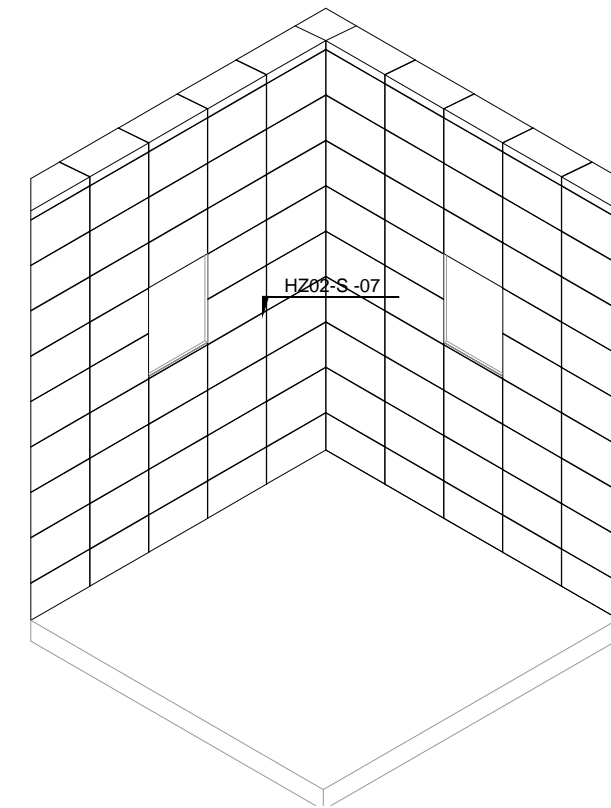
[Http://www.zgjzwjw.com](http://www.zgjzwjw.com) E- fulian.wu@shffsy.com

Title :	Horizontal Joint Installation - External Corner Stone Cladding - Horizontal Section		
Drawing No.	HAZCD-HZ02-S-ST-06		
Series	Concept Drawings - Natural Stone Fixing System - HZ02-S Support Anchors		
Revision	01	scale	As Shown
			Page : 6/13

HZ02-S



Horizontal section Scale 1:4



Isometric Scale 1:100



Shanghai Fufa Industrial
co., Ltd.,

Building 6, No. 2185 Panchuan Road, Baoshan District, Shanghai
telephone 0086+15821218807

[Http://www.zgjzwjw.com](http://www.zgjzwjw.com) E- fulian.wu@shffsy.com

Title : Horizontal Joint Installation - Internal Corner Stone Cladding - Horizontal Section

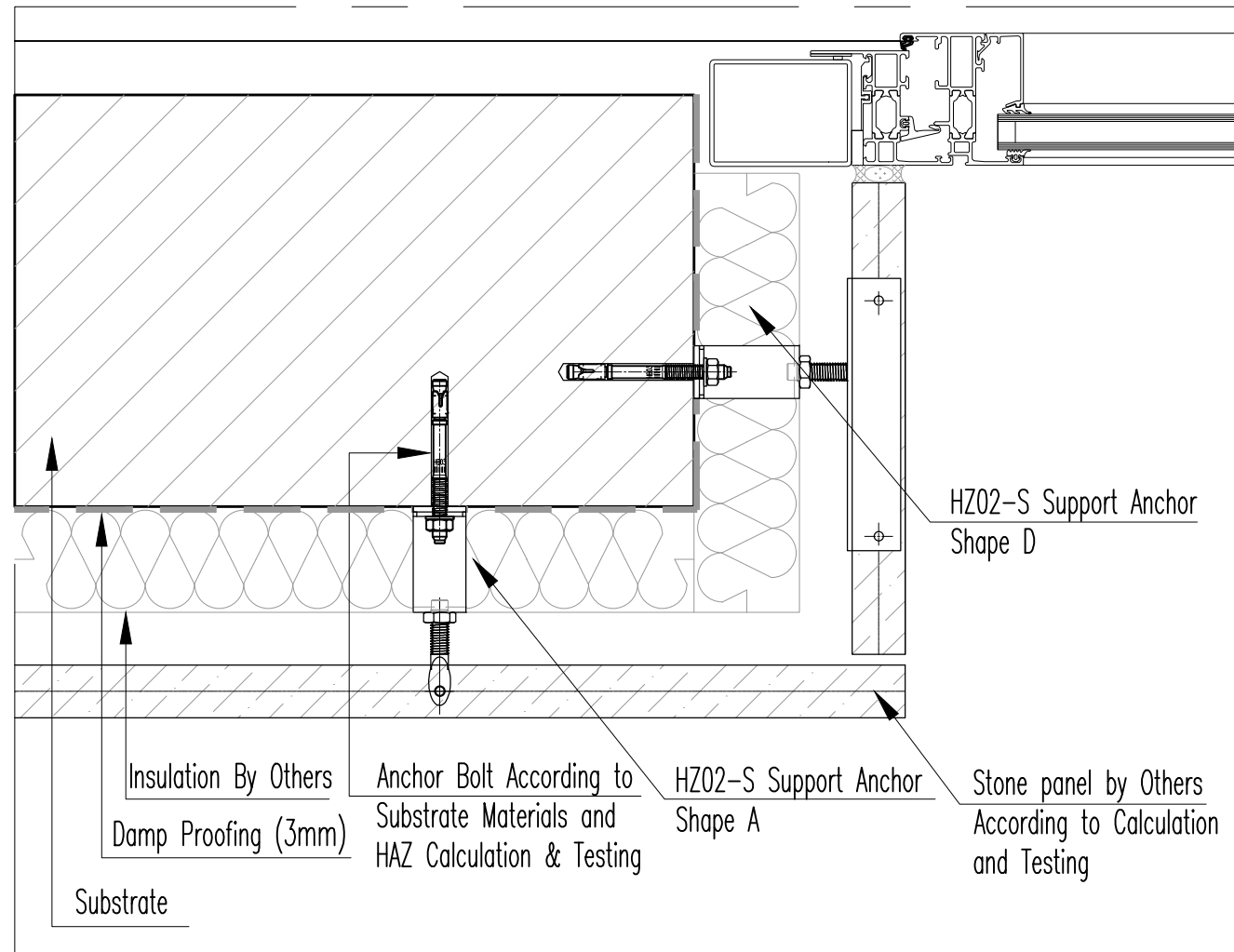
Drawing No. HAZCD-HZ02-S-ST-07

Series Concept Drawings - Natural Stone Fixing System - HZ02-S Support Anchors

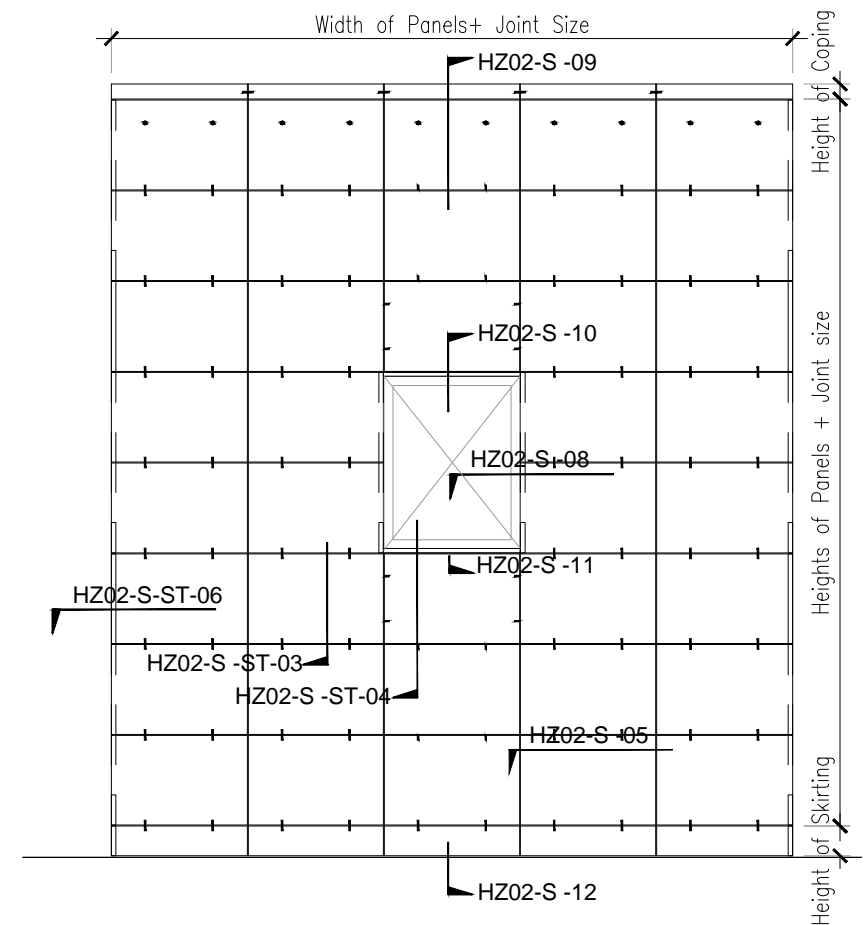
Revision 01 scale As Shown

Page : 7/13

HZ02-S



Horizontal section Scale 1:4



Elevation Scale 1:50

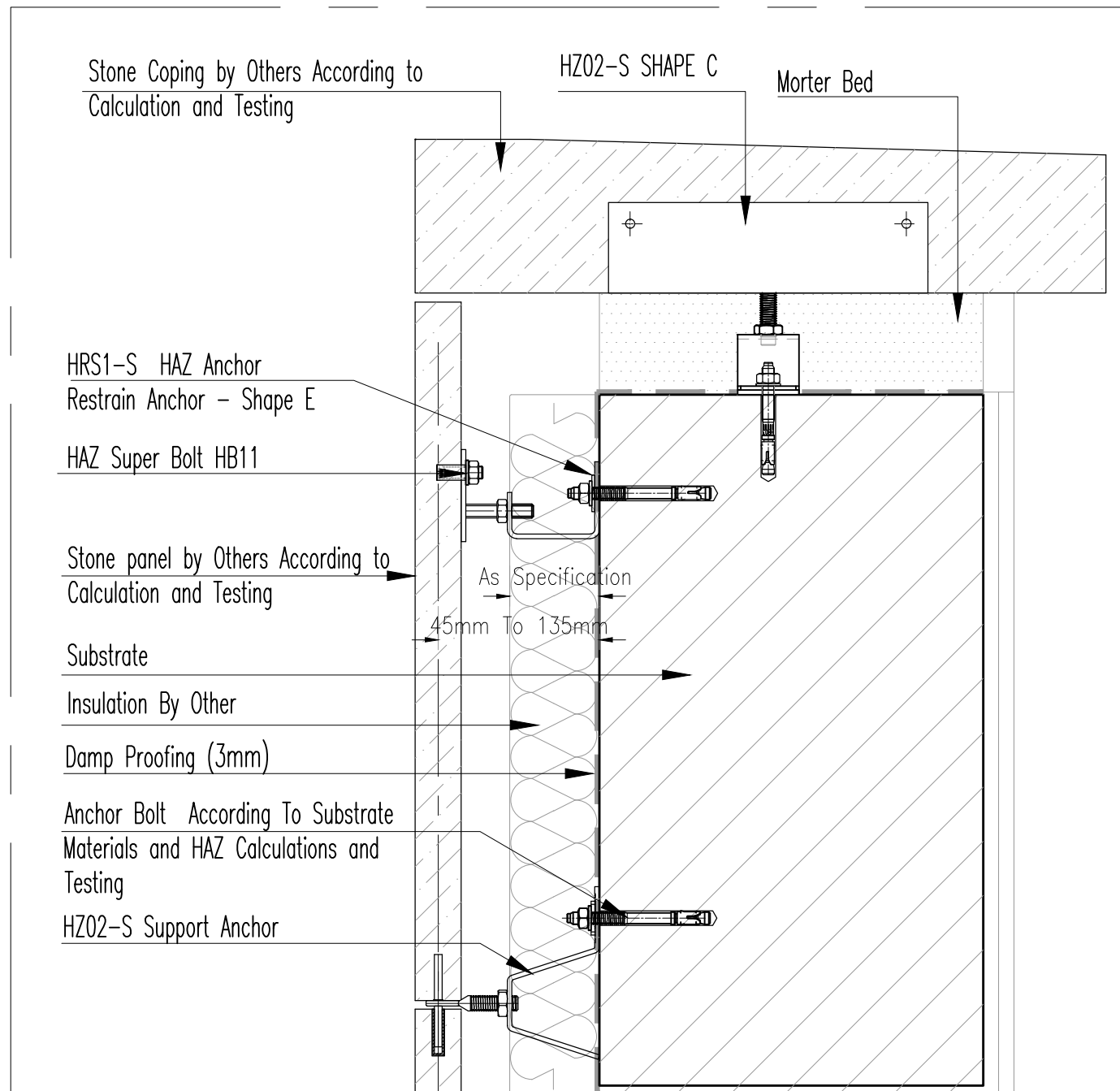
吴高®

Shanghai Fufa Industrial co., Ltd.,

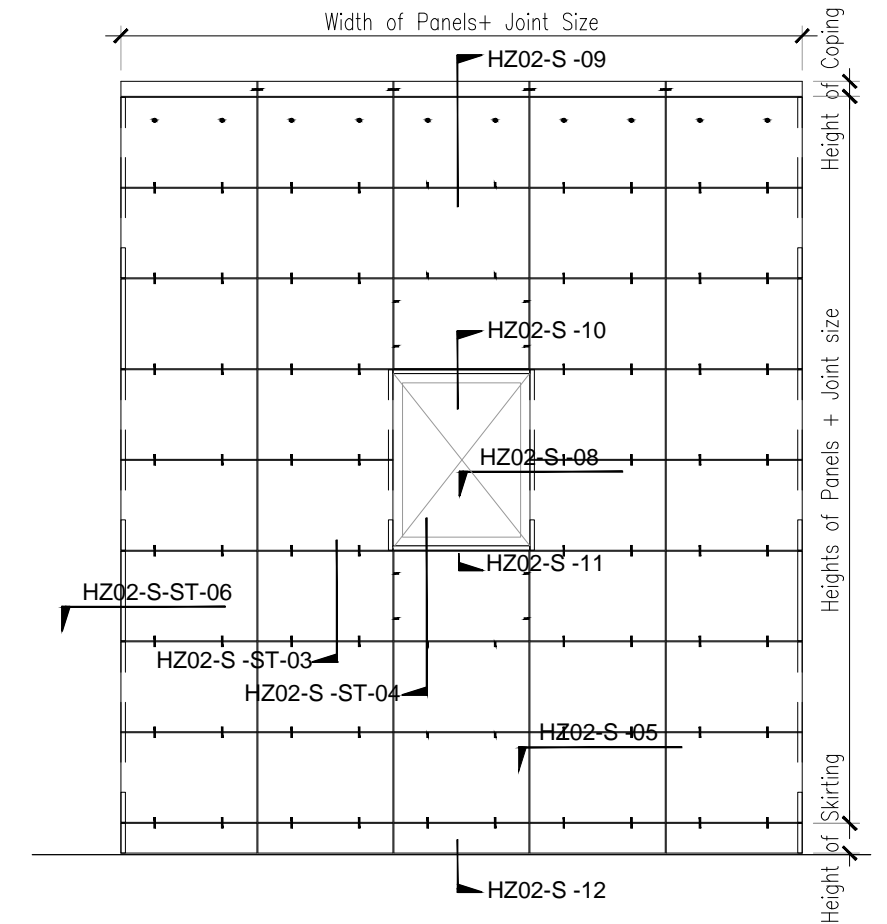
Building 6, No. 2185 Panchuan Road, Baoshan District, Shanghai
 telephone 0086+15821218807
 Http://www.zgjzwjw.com E- fulian.wu@shffsy.com

Title :	Horizontal Joint Installation - Stone Reveal - Horizontal Section		
Drawing No.	HAZCD-HZ02-S-ST-08		
Series	Concept Drawings - Natural Stone Fixing System - HZ02-S Support Anchors		
Revision	01	scale	As Shown
			Page : 8/13

HZ02-S



Vertical section Scale 1:4



Elevation Scale 1:50



Shanghai Fufa Industrial
co., Ltd.,

Building 6, No. 2185 Panchuan Road, Baoshan District, Shanghai
telephone 0086+15821218807

[Http://www.zgjzwjw.com](http://www.zgjzwjw.com) E- fulian.wu@shffsy.com

Title : Horizontal Joint Installation - Stone Coping - Vertical Section

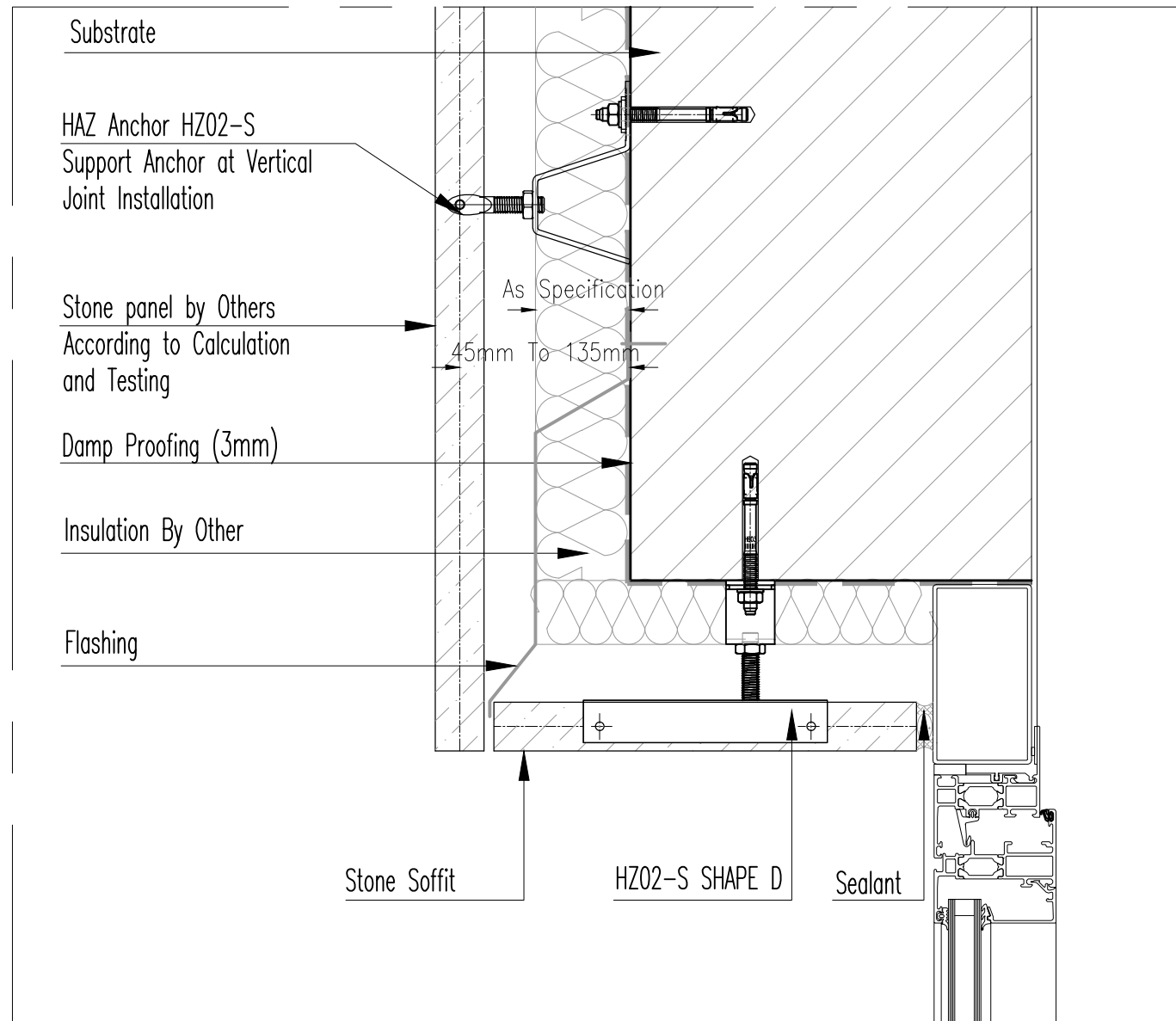
Drawing No. HAZCD-HZ02-S-ST-09

Series Concept Drawings - Natural Stone Fixing System - HZ02-S Support Anchors

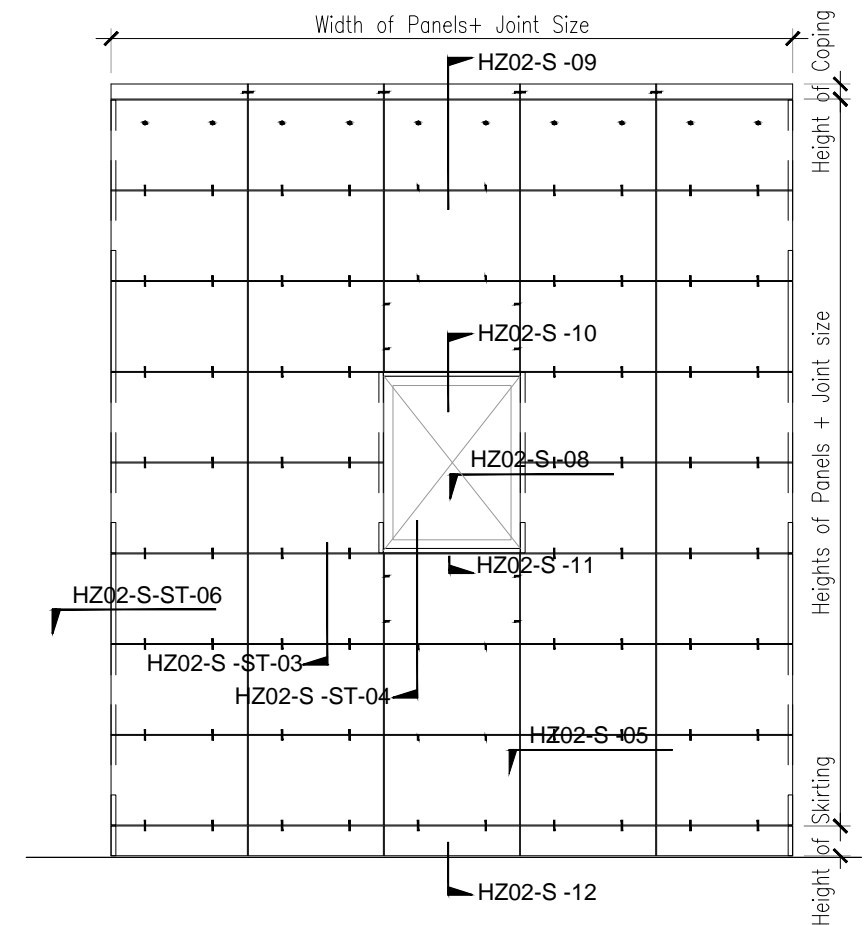
Revision 01 scale As Shown

Page : 9/13

HZ02-S



Vertical section Scale 1:4



Elevation Scale 1:50



Shanghai Fufa Industrial
co., Ltd.,

Building 6, No. 2185 Panchuan Road, Baoshan District, Shan
ghaitelphone 0086+15821218807

[Http://www.zgjzwjw.com](http://www.zgjzwjw.com) E- fulian.wu@shffsy.com

Title : Horizontal Joint Installation - Stone Soffit - Vertical Section

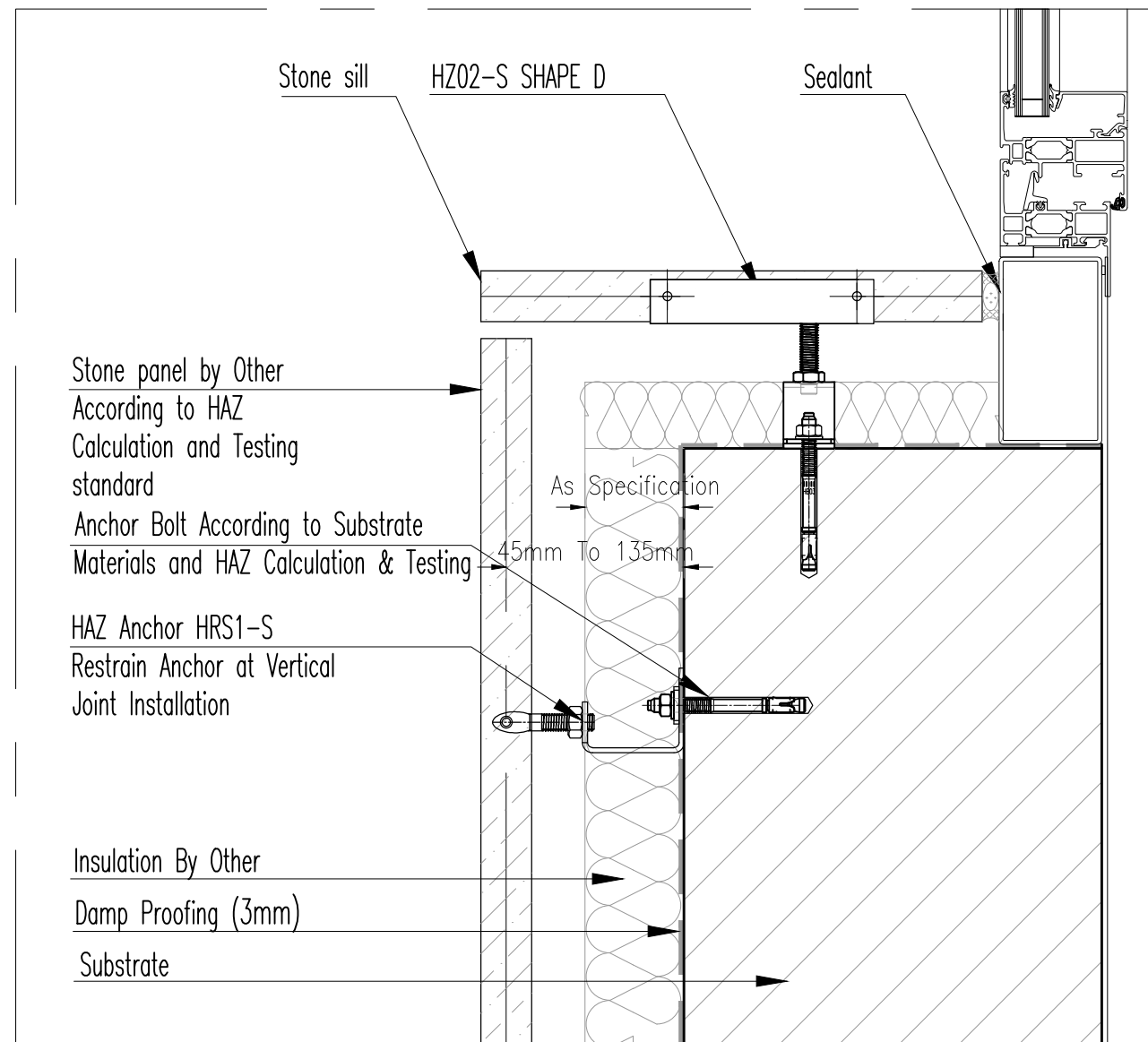
Drawing No. HAZCD-HZ02-S-ST-10

Series Concept Drawings - Natural Stone Fixing System - HZ02-S Support Anchors

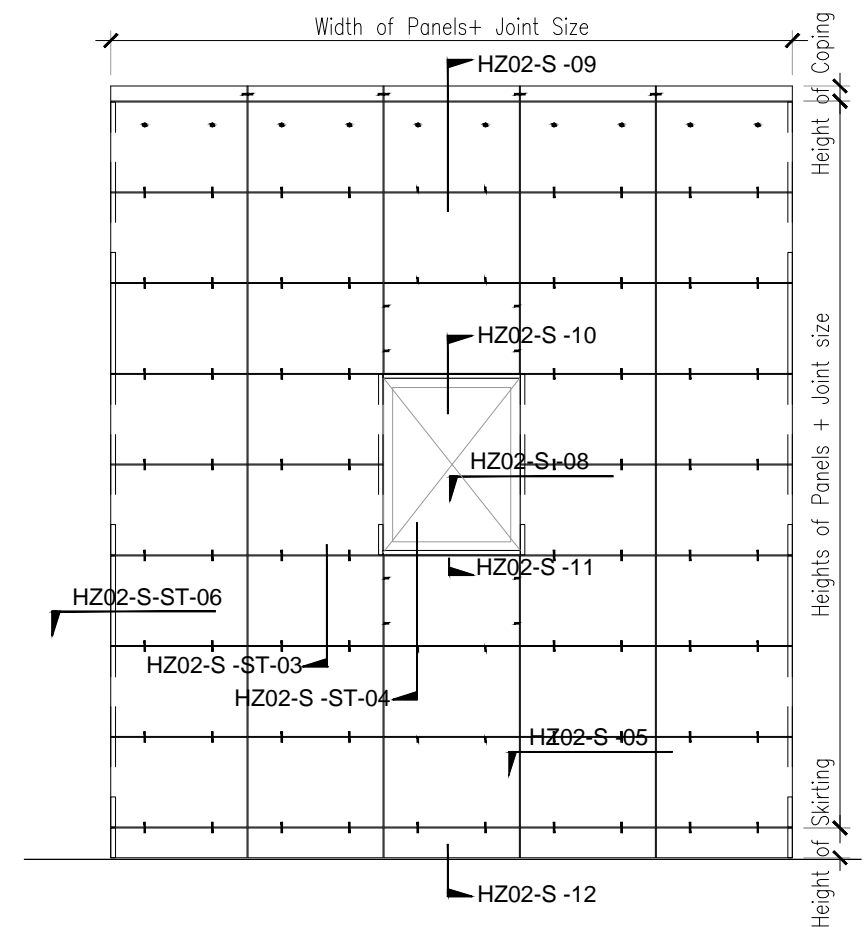
Revision 01 scale As Shown

Page : 10/13

HZ02-S



Vertical section Scale 1:4



Elevation Scale 1:50



Shanghai Fufa Industrial
co., Ltd.,

Building 6, No. 2185 Panchuan Road, Baoshan District, Shanghai
Telephone 0086+15821218807

[Http://www.zgjzwjw.com](http://www.zgjzwjw.com) E-fulian.wu@shffsy.com

Title : Horizontal Joint Installation - Stone Sill - Vertical Section

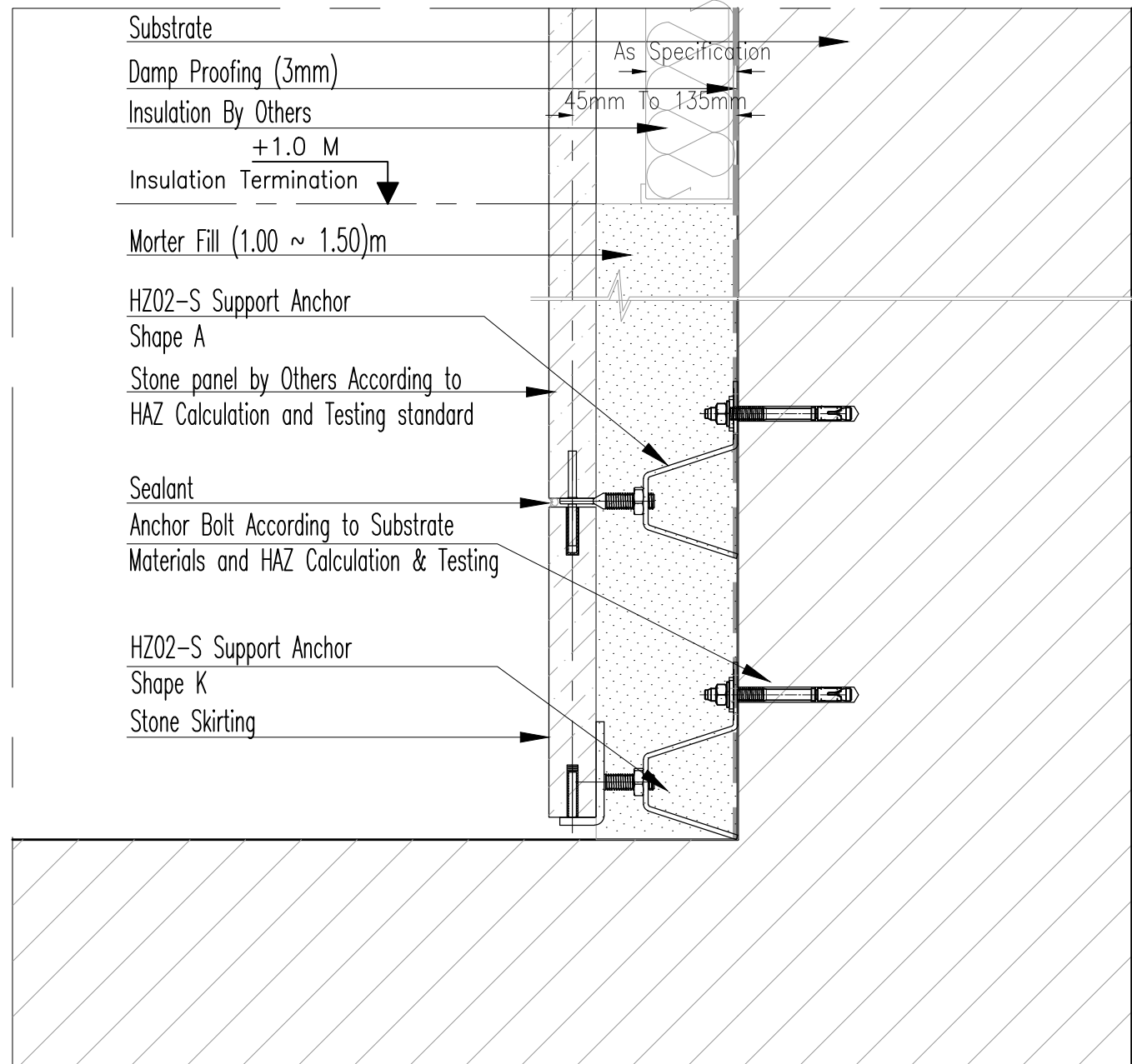
Drawing No. HAZCD-HZ02-S-ST-11

Series Concept Drawings - Natural Stone Fixing System - HZ02-S Support Anchors

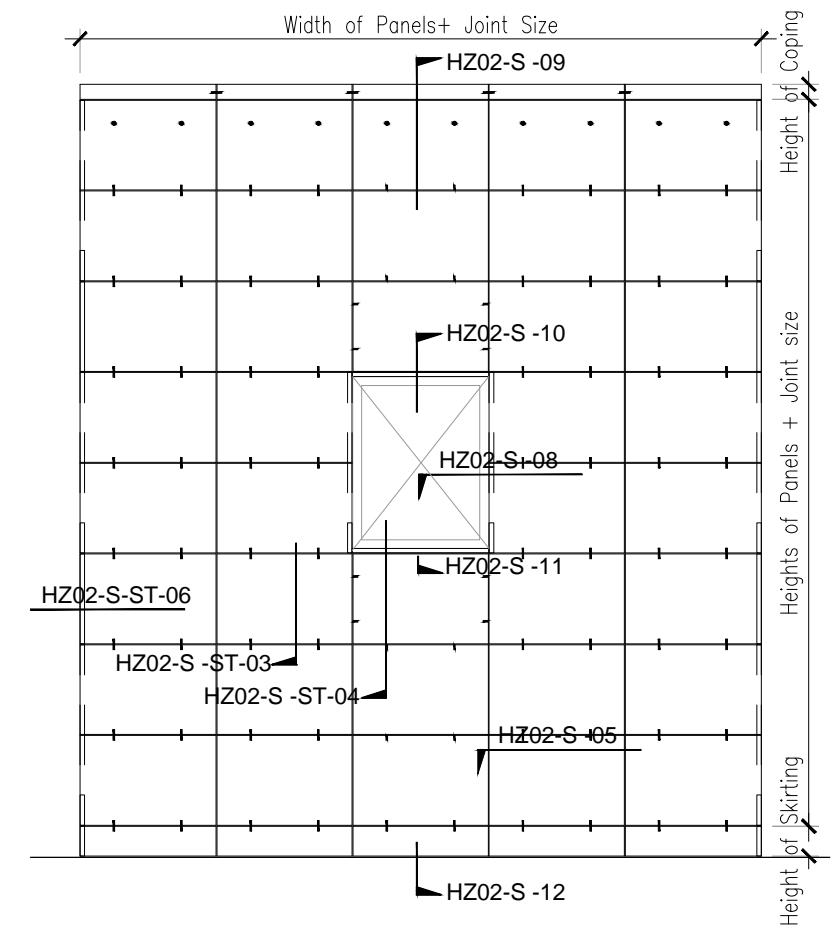
Revision 01 scale As Shown

Page : 11/13

HZ02-S



Vertical section Scale 1:4



Elevation Scale 1:50

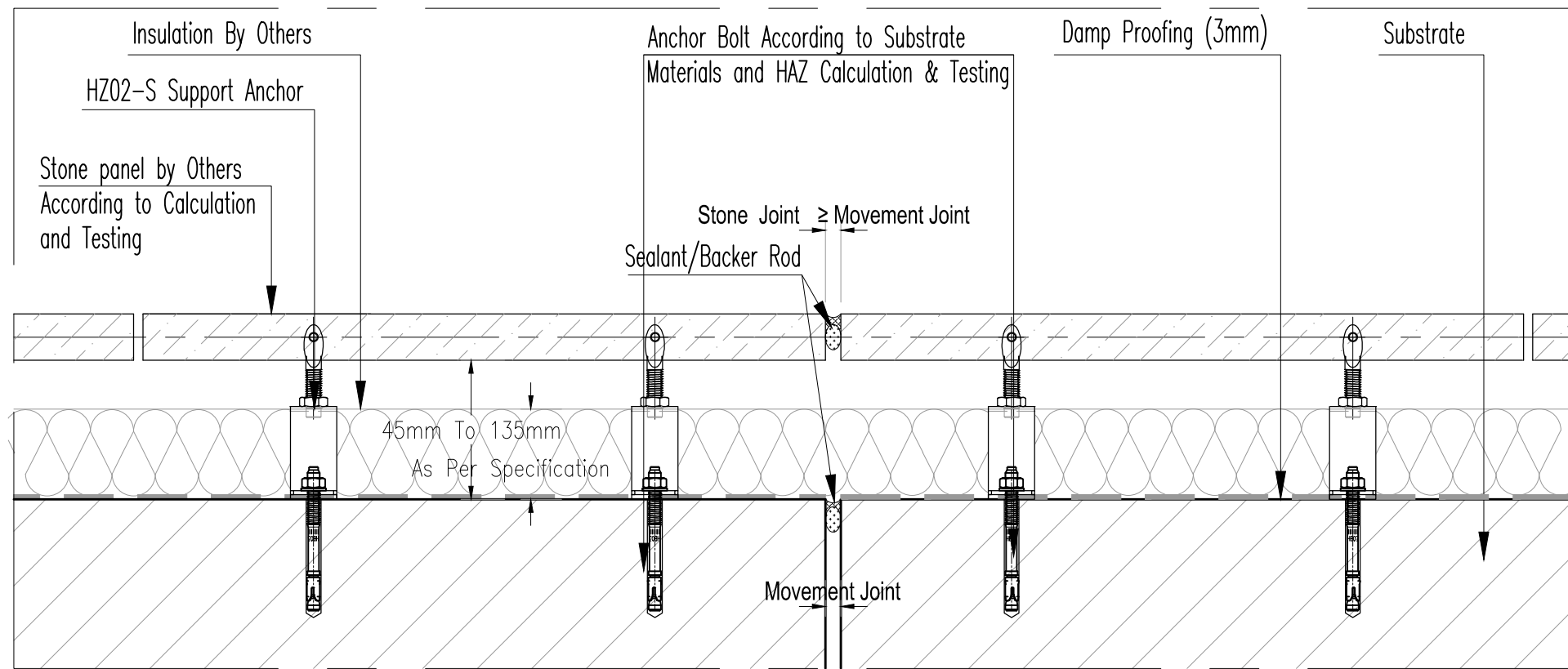


Shanghai Fufa Industrial
co., Ltd.,

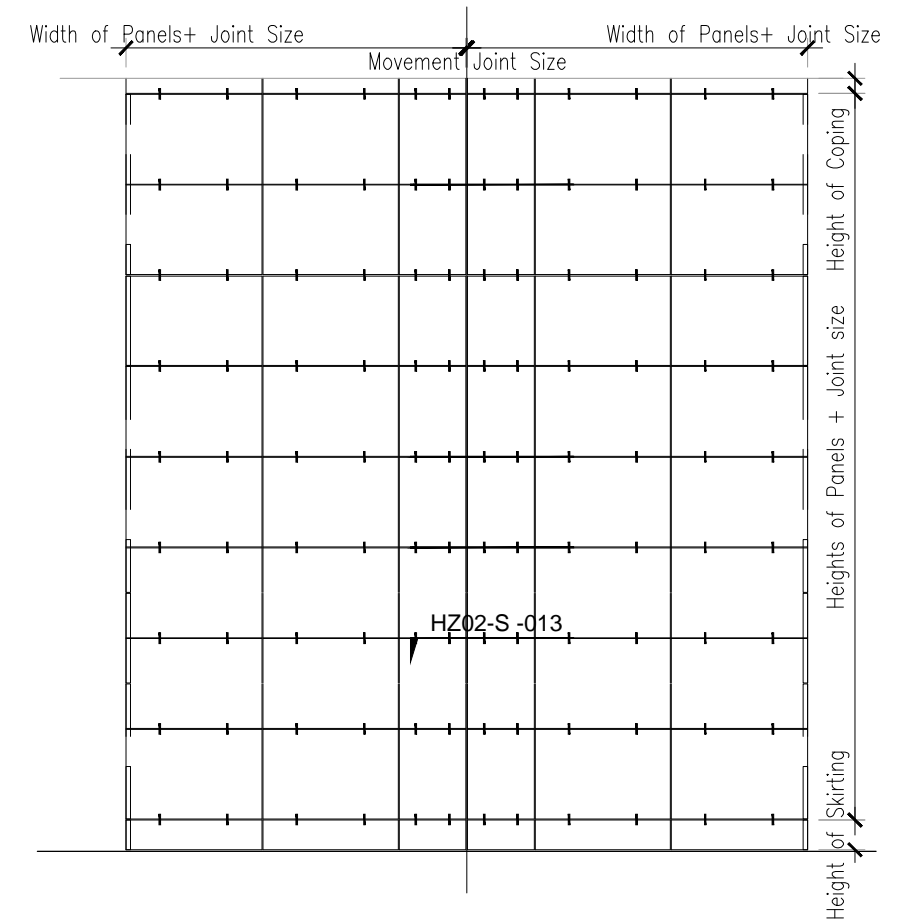
Building 6, No. 2185 Panchuan Road, Baoshan District, Shan
ghaitelphone 0086+15821218807
Http://www.zgjzwjw.com E- fulian.wu@shffsy.com

Title :	Horizontal Joint Installation - Stone Skirting - Vertical Section			
Drawing No.	HAZCD-HZ02-S-ST-12			
Series	Concept Drawings - Natural Stone Fixing System - HZ02-S Support Anchors			
Revision	01	scale	As Shown	Page : 12/13

HZ02-S



Horizontal section Scale 1:4



Variation on Typical Elevation Scale 1:50



Shanghai Fufa Industrial
co., Ltd.,

Building 6, No. 2185 Panchuan Road, Baoshan District, Shanghai
telephone 0086+15821218807

[Http://www.zgjzwjw.com](http://www.zgjzwjw.com) E- fulian.wu@shffsy.com

Title :		Horizontal Joint Installation - Typical Stone Claddings - Movement Joint - Horizontal Secti		
Drawing No.	onHAZCD-HZ02-S-ST-13			
Series	Concept Drawings - Natural Stone Fixing System - HZ02-S Support Anchors			
Revision	01	scale	As Shown	Page : 13/13